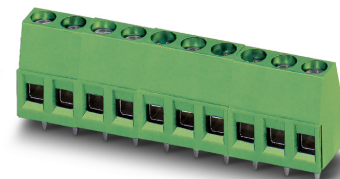


Item No.: 1715747

Type: MKDS 1,5/ 4-5,08

PCB terminal block, Screw connection with tension sleeve



The figure shows a 10-position version of the product

1 Main features



• No. of pos.	4	• Nominal current	17.5 A
• Conductor cross section	1.5 mm ²	• Nominal voltage	400 V
• Color	green (RAL 6021)	• Connection direction	0 °
• Pitch	5.08 mm	• Type of packaging	packed in cardboard
• Connection method	Screw connection with tension sleeve	• Mounting type	Wave soldering

2 Your advantages

- ✓ Well-known connection principle allows worldwide use
- ✓ Low temperature rise, thanks to maximum contact force
- ✓ Allows connection of two conductors
- ✓ The latching on the side enables various numbers of positions to be combined



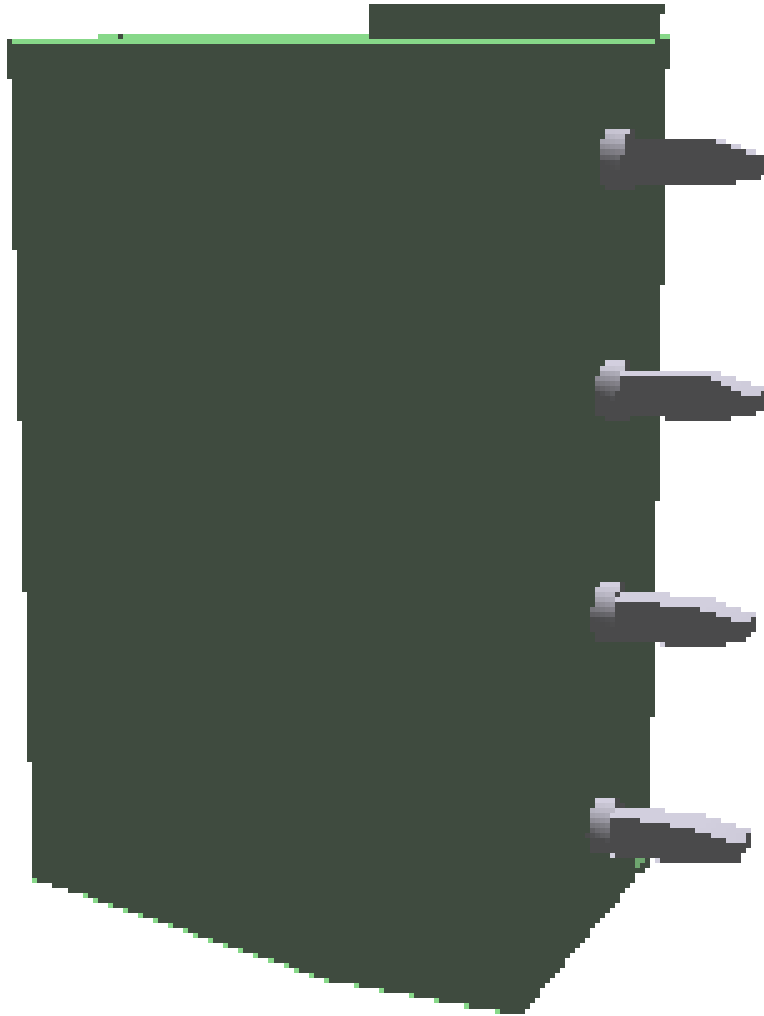
Make sure you always use the latest documentation.
It can be downloaded at: phoenixcontact.net/product/1715747

1715747 MKDS 1,5/ 4-5,08**3 Table of contents**

1	Main features.....	1
2	Your advantages	1
3	Table of contents	2
4	3D model in PDF can be activated (Acrobat Reader only).....	3
5	General Technical Data	4
6	Conductor connection	5
7	Material properties.....	5
8	Dimensions.....	6
9	Series drawing.....	7
10	Product note	8
11	Application.....	8
12	Packaging information	8
13	Mechanical tests.....	9
14	Electrical tests	10
15	Air and creepage distances	11
16	Current carrying capacity/derating curves	12
17	Environmental and durability tests	13
18	Approvals / Certificates.....	14
19	Commercial Data.....	15
20	Accessories.....	15

1715747 MKDS 1,5/ 4-5,08

4 3D model in PDF can be activated (Acrobat Reader only)



1715747 MKDS 1,5/ 4-5,08**5 General Technical Data****5.1 item properties**

Item no.	1715747
Type	MKDS 1,5/ 4-5,08
Product line	COMBICON Terminals S
Product type	PCB terminal block
Range of articles	MKDS 1,5
Pitch	5.08 mm
Number of positions	4
Number of rows	1
Number of connections	4
Number of potentials	4
Connection method	Screw connection with tension sleeve
Screw thread	M3
Drive form screw head	Slotted (L)
Connection direction of the conductor to the PCB	0 °
Pin layout	Linear pinning
Solder pins per potential	1
Product note	The article can be aligned to create different nos. of positions!
Type	PC terminal block can be aligned

1715747 MKDS 1,5/ 4-5,08**6 Conductor connection****6.1 Connection capacity**

Conductor cross section, rigid	0.14 mm ² ... 2.5 mm ²
Conductor cross section, flexible	0.14 mm ² ... 1.5 mm ²
Conductor cross section flexible, with ferrule without plastic sleeve	0.25 mm ² ... 1.5 mm ²
Conductor cross section flexible, with ferrule with plastic sleeve	0.25 mm ² ... 1.5 mm ²
2 conductors with same cross section, solid	0.14 mm ² ... 1 mm ²
2 conductors with same cross section, stranded	0.14 mm ² ... 0.75 mm ²
2 conductors with same cross section, stranded, with ferrule without plastic sleeve	0.25 mm ² ... 0.5 mm ²
2 conductors with the same cross section flexible with TWIN ferrule and plastic sleeve	0.5 mm ² ... 1 mm ²
Stripping length	7 mm
Tightening torque	0.5 Nm ... 0.6 Nm

6.2 Connection capacity AWG

Conductor cross section AWG	26 ... 14
-----------------------------	-----------

7 Material properties**7.1 Material of metal parts**

Note	WEEE/RoHS-compliant, whisker-free acc. to IEC 60068-2-82/JEDEC JESD 201
Contact material	Cu alloy
Terminal point surface	Tin (4 - 8 µm Sn)
Soldering area surface	Tin (4 - 8 µm Sn)
Surface characteristics	Tin-plated

7.2 Material of plastic parts

	Housing
Color	green (RAL 6021)
Insulating material	PA
Insulating material group	I
CTI according to IEC 60112	600
Flammability rating according to UL 94	V0
Glow wire flammability index GWFI according to EN 60695-2-12	850
Glow wire ignition temperature GWIT according to EN 60695-2-13	775
Temperature for the ball pressure test according to EN 60695-10-2	125 °C

1715747 MKDS 1,5/ 4-5,08

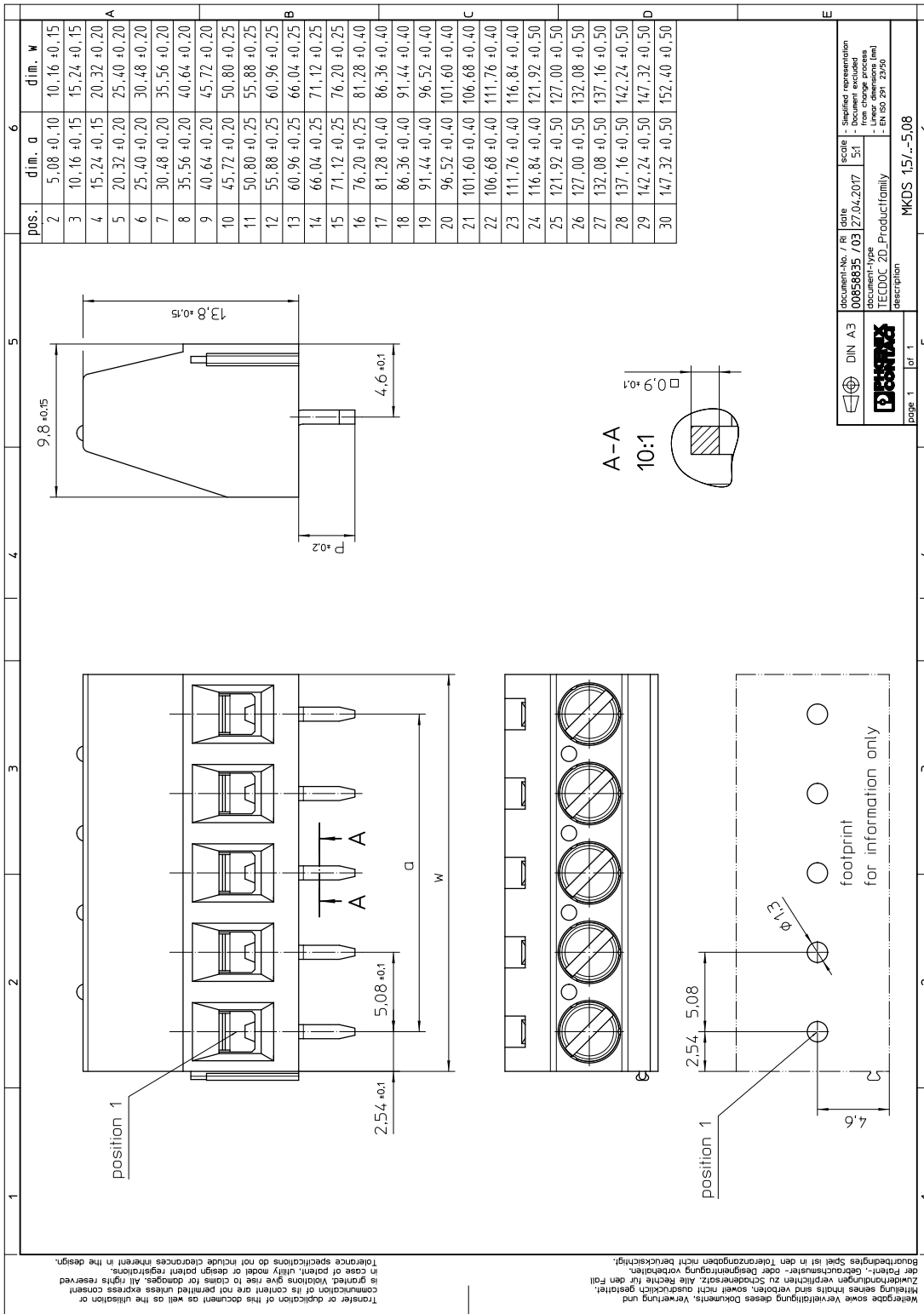
8 Dimensions

8.1 Dimensions for the product

Length	9.8 mm
Width	20.32 mm
Height (without solder pin)	13.8 mm
Total height	17.3 mm
Solder pin [P]	3.5 mm

1715747 MKDS 1,5/ 4-5,08

9 Series drawing



DIN A3	document-No. / Ri	date	scale	Supplied representation
	00958835 / 03	27.04.2017	5:1	- Linear dimensions (mm)
	document-type			- Non-linear dimensions (mm)
	TECDOC 2D_Productfamily			- Linear dimensions (mm)
				- EN ISO 291 - 2950
page 1	for 1			
				description
				MKDS 1,5/..-5,08

1715747 MKDS 1,5/ 4-5,08**10 Product note****10.1 General information**

Note on application

For safe conductor connection, always adhere to a defined tightening torque. Particularly in the case of PCB terminal blocks with two or three positions, the individual solder pin for each contact point cannot compensate for this. That is why the terminal blocks must be supported during conductor connection (held with one hand, support on the housing).

10.2 Dimensions for PCB design

Hole diameter	1.3 mm
Pin dimensions	0.9 x 0.9 mm

11 Application**12 Packaging information**

Type of packaging	packed in cardboard
Pieces per package	250

12.1 Temperature limit values

Ambient temperature (storage/transport)	-40 °C ... 70 °C
Relative humidity (storage/transport)	30 % ... 70 %
Ambient temperature (assembly)	-5 °C ... 100 °C
Ambient temperature (operation)	-40 °C ... 105 °C (Depending on the current carrying capacity/derating curve)

1715747 MKDS 1,5/ 4-5,08**13 Mechanical tests****13.1 Pull-out test**

Specification	IEC 60999-1:1999-11
Result	Test passed
Conductor cross section/conductor type/tractive force actual value	0.14 mm ² / solid / > 10 N
Conductor cross section/conductor type/tractive force actual value	0.14 mm ² / flexible / > 10 N
Conductor cross section/conductor type/tractive force actual value	2.5 mm ² / solid / > 50 N
Conductor cross section/conductor type/tractive force actual value	1.5 mm ² / flexible / > 40 N

13.2 Check for damage to conductor or loosening

Specification	IEC 60999-1:1999-11
Result	Test passed

1715747 MKDS 1,5/ 4-5,08**14 Electrical tests**

Rated current / conductor cross section	17.5 A / 1.5 mm ²
Rated insulation voltage (III/2)	400 V
Rated surge voltage (III/2)	4 kV
Contact resistance	0.31 mΩ
Degree of pollution	2

14.1 Short-time withstand current test

Specification	IEC 60947-7-4:2019-01
Result	Test passed
Conductor cross section/short-time current	2.5 mm ² / 97.2 A

14.2 Aging test (climatic impact and corrosion testing)

Specification	IEC 60947-7-4:2019-01
Result	Test passed
Contact resistance R ₁	0.31 mΩ / 2.5 mm ²
Test sequence 1: low temperature storage	-40 °C / 2 h
Test sequence 2: heat storage	168 h/105 °C
Test sequence 3: noxious gas storage (ISO 6988)	KFW 0.2 S/1 cycle
Contact resistance R ₂	0.3 mΩ / 2.5 mm ²
Rated impulse voltage at sea level Voltage waveform ≥ (1.2/50 μs)	4.8 kV
Power-frequency withstand voltage Voltage waveform ≥ (50/60 Hz)	3.1 kV

14.3 Insulation resistance

Specification	IEC 60512-3-1:2002-02
Result	Test passed
Insulation resistance, neighboring positions	> 5 MΩ

14.4 Mechanical connection test for the PCB terminal block

Specification	IEC 60947-7-4:2019-01
Result	Test passed

14.5 Temperature rise test

Specification	IEC 60947-7-4:2019-01
Result	Test passed
Requirement temperature-rise test	The sum of ambient temperature and temperature rise of the PCB terminal block shall not exceed the upper limiting temperature.
Conductor cross section/test current/temperature rise	2.5 mm ² / 24 A / 28 K
Conductor cross section/test current/temperature rise	1.5 mm ² / 17.5 A / 26.5 K

1715747 MKDS 1,5/ 4-5,08**15 Air and creepage distances**

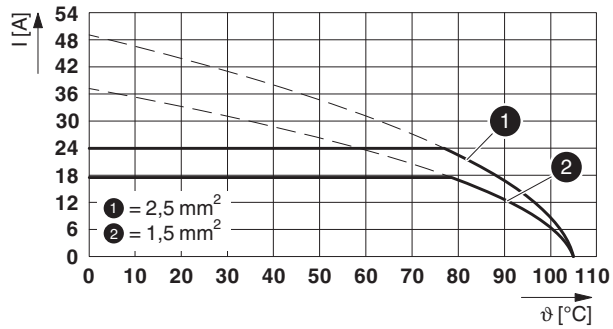
Component	PCB terminal block		
Specification	IEC 60947-1:2007-06 + A1:2010-12 + A2:2014-09		
Mains type	unearthed mains		
Insulating material group	I		
Comparative tracking index (IEC 60112)	CTI 600		
Rated insulation voltage	250 V	400 V	630 V
Rated surge voltage	4 kV	4 kV	4 kV
Degree of pollution	3	2	2
Overvoltage category	III	III	II
Minimum clearance case A (inhomogeneous field)	3 mm	3 mm	3 mm
Minimum value of the creepage path requirement in acc. with table	3.2 mm	3 mm	3.2 mm

1715747 MKDS 1,5/ 4-5,08

16 Current carrying capacity/derating curves

Specification	IEC 60947-7-4:2019-01
Note	Representation based on IEC 60512-5-2:2002-02
Reduction factor	1
Number of positions	4
Conductor cross section	1.5 mm ²

Type: MKDS 1,5/...-5,08



1715747 MKDS 1,5/ 4-5,08**17 Environmental and durability tests****17.1 Vibration test**






Specification	IEC 60068-2-6:2007-12
Result	Test passed
Frequency	10 - 150 - 10 Hz
Sweep speed	1 octave/min
Amplitude	0.35 mm (10 Hz ... 60.1 Hz)
Acceleration	5g (60.1 Hz ... 150 Hz)
Test duration per axis	2.5 h
Test directions	X-, Y- and Z-axis
Note	

17.2 Assessment of fire risk (glow wire test)

Specification	IEC 60695-2-10:2013-04		
Result	Test passed		
Temperature	850 °C		
Time of exposure	5 s		

1715747 MKDS 1,5/ 4-5,08

18 Approvals / Certificates

CSA 	Voltage [V]	Current [A]	Cross section [AWG]	Cross section [mm ²]
Usegroup B				
	300 V	10 A	28 - 14	-
Usegroup D				
	300 V	10 A	28 - 14	-
EAC 				
cULus Recognized 	Voltage [V]	Current [A]	Cross section [AWG]	Cross section [mm ²]
Usegroup B				
	300 V	15 A	30 - 14	-
Usegroup D				
	300 V	10 A	30 - 14	-
DNV GL 				
IECEE CB Scheme 	Voltage [V]	Current [A]	Cross section [AWG]	Cross section [mm ²]
	400 V	24 A	-	0.2 - 2.5
VDE Zeichengenehmigung 	Voltage [V]	Current [A]	Cross section [AWG]	Cross section [mm ²]
	400 V	24 A	-	0.2 - 2.5

1715747 MKDS 1,5/ 4-5,08**19 Commercial Data**

Item no.	1715747
Type	MKDS 1,5/ 4-5,08
Pieces per package	250
Net weight	5.39 g
GTIN	4017918024215
	Information that applies locally, see link on page 1

20 Accessories

Description	Item No.	Type
Actuation tool, for ST terminal blocks, insulated, also suitable for use as a bladed screwdriver, size: 0.6 x 3.5 x 100 mm, 2-component grip, with non-slip grip	1205053	SZS 0,6X3,5
	0804293	SK 5,08/3,8:FORTL.ZAHLEN
Pitch spacer, for adjusting the pitches between MKDS and GMKDS terminal blocks in mixed rows, 1.25 mm thick	1702048	RZ 1,25-MKDS 1,5
Insertion bridge for connectors with 5.0 mm or 5.08 mm pitch	1733169	EBP 2- 5
Insertion bridge for connectors with 5.0 mm or 5.08 mm pitch	1733172	EBP 3- 5
Insertion bridge for connectors with 5.0 mm or 5.08 mm pitch	1733185	EBP 4- 5
Crimping pliers, for ferrules without insulating collar according to DIN 46228 Part 1 and ferrules with insulating collar according to DIN 46228 Part 4, 0.25 mm ² ... 6.0 mm ² , lateral entry, trapezoidal crimp	1212034	CRIMPFOX 6